



e-ISSN: 2319-8753 | p-ISSN: 2347-6710

# IJIRSET

International Journal of Innovative Research in  
**SCIENCE | ENGINEERING | TECHNOLOGY**



# INTERNATIONAL JOURNAL OF INNOVATIVE RESEARCH

IN SCIENCE | ENGINEERING | TECHNOLOGY

Volume 12, Special Issue 1, April 2023

**ISSN** INTERNATIONAL  
STANDARD  
SERIAL  
NUMBER  
INDIA



9940 572 462



6381 907 438



ijirset@gmail.com



www.ijirset.com

# **Evaluation and Implementation of SCADA Systems Sewage Treatment Plant**

**Mr. C.Stalinjose<sup>1</sup>, Dhanaseelan.H. R<sup>2</sup>, Guruprasath.M<sup>3</sup>, Gowtham.M<sup>4</sup>, Chetan.S<sup>5</sup>**

Assistant Professor, Department of Electronics and Communication Engineering, Adhiyamaan College of Engineering,  
Krishnagiri, Tamil Nadu, India <sup>1</sup>

UG Students, Department of Electronics and Communication Engineering, Adhiyamaan College of Engineering,  
Krishnagiri, Tamil Nadu, India <sup>2,3,4,5</sup>

**ABSTRACT:** Supervisory control and data acquisition (scada) is the standard term for these digital networks and computer systems that gather and analyse real-time data. There are three main stages of the wastewater treatment process, primary, secondary and tertiary water treatment. Wonderware intouch enables users to quickly and easily create and centrally manage standardized, reusable, industrial applications, maximizing return on engineering, shortening project times, reducing risk and significantly reducing total cost of ownership. There are four types of scada systems: monolithic, distributed, networked and iot.ascada system is a distributed computer system used for process monitoring and waste control. It consists of software, network, plant equipment, controllers and telecommunications control. It enables remote access for operations management, and is used by industrial organizations to access real-time data. Scada systems can communicate using lan protocols and offer enterprise level features such as alarm systems and real time reporting of process failures. An abstract of scada system sewage treatment is to provide an efficient scada system that allows water companies to secure their entire distribution system, by providing live process information, optimizing data transfer and helping vendors control the process.

**KEYWORDS:** scada, hmi,wastecontrol, network, sewage system

## **I. INTRODUCTION**

SCADA software enables water treatment facilities to provide automated process control and identify plant staff for resource recovery. It also provides advanced workshop and data control, as well as an HMI (Human-Machine Interface) interface. SCADA systems can be used to monitor a wide range of quality applications such as source identification, quality assessment, treatment processes, flow control, and pollution monitoring. They can also be used to automate typically manual tasks within industries such as water management facilities, manufacturing plants, and oil and gas operators. Open source SCADA systems are a great option for water treatment plants as they offer numerous applications and features, such as the ability to collect data from flow meters, pumping stations, filtration plants and other sources in real time. This enables the facility to perform instantaneous data analysis and identify potential problems before they become costly. SCADA systems are used to process commands, control systems, and monitor physical processes. They provide users with extensive automation features that can help avoid repetitive tasks. Modern SCADA systems are designed to manage and control their entire system from a single location, as well as monitor the entire system remotely. The system operator can connect to the remote terminal units (RTUs) and operate them from a central location. Sensors and actuators are also connected to RTUs or PLCs, which allow placing computers in hazardous areas, process control areas, or near real-time control systems. The SCADA system is used for wastewater treatment, allowing operators to view computer systems in real time and access factory information from anywhere in the world. The SCADA computer system provides operators with real-time process information, allowing them to make decisions faster and more accurately. It can be used for modeling and simulation systems, as well as security systems. It can also be used to monitor remote terminal units (RTUs). The SCADA communication network is the backbone of the system, Allowing operators to connect multiple rtus together while providing them with access to live process information from all connected devices.

**International Journal of Innovative Research in Science, Engineering and Technology***An ISO 3297: 2007 Certified Organization**Volume 12, Special Issue 1, April 2023***10<sup>th</sup> National Conference on Frontiers in Communication and Signal Processing Systems (NCFCSPPS '23)****5<sup>th</sup> -6<sup>th</sup> April 2023****Organized by****Department of ECE, Adhiyamaan College of Engineering, Hosur, Tamilnadu, India**

Scada systems give operators the confidence that their facility is being monitored and controlled correctly, with multiple means of communication. Scada system sewage treatment is becoming increasingly popular when it comes to protecting water resources and utilities. Scada systems allow utilities to monitor pumps closing valves and other parts of the distribution infrastructure in order to prevent contamination or other disasters from occurring. Vtscada software allows operators to do this in areas beyond their facility as well. Scada systems are used to automate typically manual tasks within industries such as water management facilities, manufacturing plants, and oil and gas operators. Open source scada systems are a great option for wastewater treatment plants as they allow you to collect data from flow meters, pumping stations, filtration plants and other sources in real time. Scada systems can also be used to automate more industrial processes, reduce water costs and make the operation of your facility more efficient. Modern scada systems allow users to manage and control their entire system from a single location, as well as monitor the entire system remotely. The scada computer system allows the system operator to connect to the remote terminal units (rtus) and operate them from a central location. The scada system is used for wastewater treatment, allowing operators to view computer systems in real time and access factory information from anywhere in the world. Sensors and actuators are connected to rtus or plcs, which allow placing computers in hazardous areas, process control areas, or near real-time control systems. Remote terminals provide operators with instant access to all rtus via the terminal units, and plcs control and monitor process variables. The scada computer system can provide operators with real-time process information, allowing them to make decisions faster and more accurately. It can also provide communications management for the water distribution system, modeling and simulation systems, interfacing with security systems, and monitoring remote terminal units (rtus). The scada communication network is the backbone of the entire system.

## II. RELATED WORKS

Supervisory control and data acquisition (scada) technology is an essential component in any modern wastewater treatment plant due to its ability to monitor the plant flow and service reservoirs, as well as downstream reservoirs. It also allows for data analysis of usage trends over time, and alarms can be set up to alert operators when certain thresholds are reached or exceeded. Scada systems have extensive automation features that allow wastewater operators to monitor and control their treatment plants remotely, with minimal human intervention. Basic maintenance practices and proactive planning are essential when it comes to the successful operation of a treatment plant or community's water distribution, and scada systems allow for close adherence to critical systems and components. They also allow for greater control over these systems, so that any potential problems can be identified quickly and dealt with efficiently.

SCADA systems are becoming increasingly important for managing and monitoring modern-day facilities related to water treatment and distribution. They allow system operators to monitor the quality of valuable drinking water sources and wastewater facilities in real time, remotely access the system from any location, and use data analytics tools to gain insights into their processes. For urban wastewater treatment facilities, SCADA systems offer even more advantages since they can provide an overview of the entire water cycle from intake to distribution. These systems can be integrated with other software solutions for more effective supervisory control and advanced automation capabilities that help improve overall facility performance levels while reducing downtime due to unexpected events or equipment malfunctions.

## III. EXISTING SYSTEM

Scada systems are digital technologies used in wastewater treatment plants to monitor and automate processes. They allow professionals to monitor and control functions of the plants, as well as measure performance. Many municipalities have adopted these systems for their wastewater treatment plants due to their ability to provide real-time data for better management and control of plant operations. SCADA systems allow wastewater operators to monitor levels of toxins and other pollutants in the water, and keep an eye on plant operations. They also allow for automation of certain processes, such as purification and filtration, which can save time and money. Manufacturers use SCADA systems to collect data and analyze it, allowing them to make decisions quickly and accurately. AI technology is used in many SCADA systems today, allowing for more accurate predictions and automated responses. SCADA system simulations are used in scale urban wastewater treatment plants, allowing for more accurate process information and control. Plant SCADA is software platforms that are used to monitor, collect, and analyze data from a wastewater treatment plant. It provides



operators with real-time updates on the live process information of a plant's operation, and SCADA level automation allows operators to control certain aspects of the wastewater distribution and management process with greater accuracy and precision. This can help operators quickly respond to any changes or issues within their plant's operation and make necessary adjustments accordingly for better water quality outcomes.

#### IV. PROPOSED SYSTEM

The proposed system of SCADA System Sewage Treatment provides municipal clients with a SCADA software that can be accessed by the municipal client personnel. It provides HMI interface for the control and logistical transfer of water treatment and wastewater sites treatment process, and allows for having multiple servers in order to monitor facilities. SCADA systems also allow for water management plants to monitor and control the different levels of urban wastewater, as well as provide data quality analysis to ensure that the quality of the effluent is meeting the standards set by regulatory authorities. Manufacturers often use SCADA systems to provide an effective platform for the operation and control of wastewater treatment plants. The SCADA level provides a comprehensive system of collecting data from various sources, and analyzing it in order to make decisions or changes accordingly. The plant SCADA system provides system operators with real-time information and control over different areas of their facility, and provides analysis tools that can help them identify areas where improvements can be made. SCADA systems provide insights on pH levels, oxygen levels, and other parameters that are important for efficient operation. The proposed system of SCADA system sewage treatment will provide wastewater treatment facility with pumps closing valves and monitoring of the wastewater systems. Automated systems like the react SCADA systems can be used to provide parallel control systems, replacing legacy controls. The public sewer authority is using the legacy SCADA system to run the operations of their 28 wastewater treatment facility and 28 remote pumping stations. The water monitoring systems provide operators with the visibility they need to manage their operations more efficiently and effectively, reducing staff time and resources required to operate this large system.

#### V. WORKING DIAGRAM

A Block Diagram for SCADA Sewage System provides a SCADA system which is used for process control and centralized control systems. It consists of controllers, network interfaces, control monitoring, automation, and communication equipment. The SCADA computer system consists of a control system architecture where it can process commands and control data acquisition. The Supervisory System consists of multiple RTUs that are connected together utilizing a common communication protocol and able to transmit data back up through the network server or directly back to the system. SCADA movicon system is used to provide control functions for parameters processes at the distribution plants and the treatment station, and PLCs or PC based workstations can be used to monitor and control plant sedimentation activities. SCADA applications offer modern visualization applications for monitoring pressure.

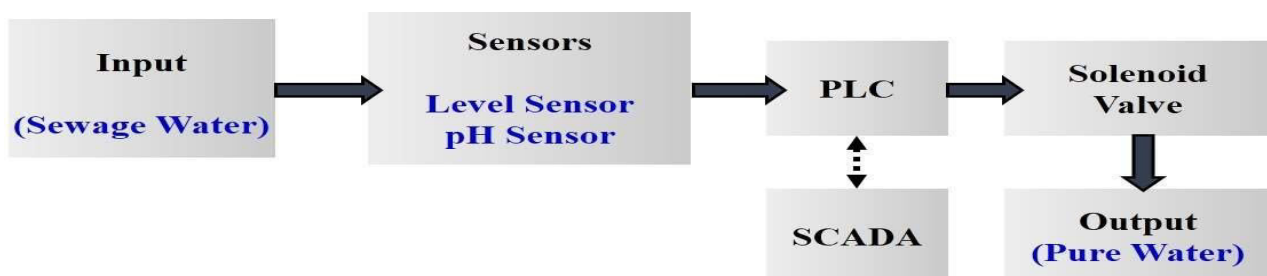


Fig. 1 Block Diagram

This system is used to monitor and control numerous systems within a single sewage treatment plant, such as controlled watertank levels, filtration chemical treatment, sedimentation filtration and advanced water treatment. SCADA movicon systems are used to provide control functions for parameters processes at the distribution plants and the treatment station, while PLCs or PC based workstations can be used to monitor sedimentation activities. The block diagram for SCADA Sewage System is designed to make it easier for the control room operator to override normal PLCcontrols and do supra control. The process system also enables the operator to make supervisory decisions quickly and accurately by opening measuring chambers, such as those used in sewage water systems, using an interface terminal. High reliability is a key feature of these systems, as they are able to use functions like exceeding permissible water levels and alerting operators in simple cases.

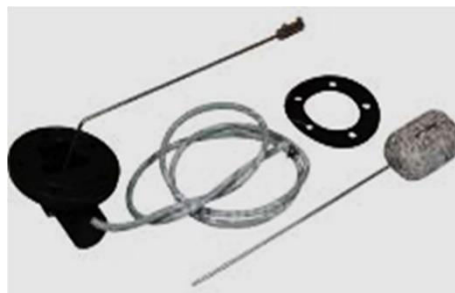


Fig .2 Level Sensor

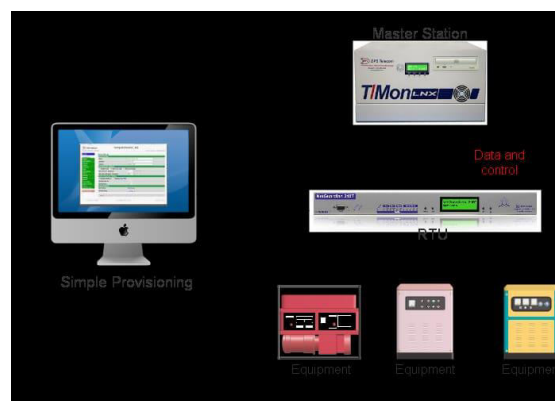


Fig .3 Control

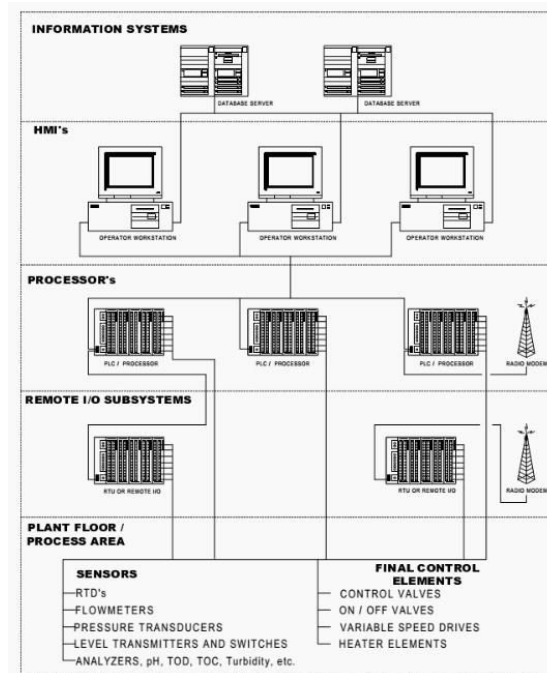


Fig. 4 Scada System Architecture.

## VI. FUTURE SCOPE

Large public sewer authorities are looking to streamline training operations across their system, such as fort smith water & wastewater utility, which has recently implemented a robust scada system to replace the present day scada systems. This new system architecture allows for better control over their operations and provides them with the flexibility needed to meet new regulations and requirements. It also offers more granular control over each individual station, allowing for greater accuracy when diagnosing issues or responding to alarms. The upgrade process for the scada sewage system will provide a wastewater treatment facility with many benefits, such as improved energy efficiency, increased safety, and enhanced cost savings. Factors that will bolster the market for these systems include the ability to change installing processes, a more effective scada system, and cost-effective solutions.

## VII.CONCLUSION

SCADA systems for wastewater treatment are an efficient way to manage water treatment processes by controlling water pressure, executing pumps opening and closing valves, providing visibility to connected pump houses, providing an interface for changing attackers, executing commands from remote locations, detecting malicious hackers, and performing control actions. The SCADA master unit controls the entire system, while the SCADA communication server facilitates the flow of data. Ovation SCADA software processes the data and provides a Human Interface for operators, managers and supervisors. The design and implementation of a SCADA sewage system is essential for ensuring effective operation of treatment plants. Remote access units (RTUs) allow remote access of the system by connected computers, and the system is connected to various control systems. This allows managers and supervisors to monitor operations remotely through a secure connection. Additionally, the system can be integrated with other systems such as data quality analysis, advanced data quality, and implementation testing to become compliant with effluent quality standards and ensure optimal performance of the plant's SCADA system. Additionally, integrating software that enables data

**International Journal of Innovative Research in Science, Engineering and Technology***An ISO 3297: 2007 Certified Organization**Volume 12, Special Issue 1, April 2023***10<sup>th</sup> National Conference on Frontiers in Communication and Signal Processing Systems (NCFCSPS '23)****5<sup>th</sup> -6<sup>th</sup> April 2023****Organized by****Department of ECE, Adhiyamaan College of Engineering, Hosur, Tamilnadu, India**

acquisition methods such as SCADA level operations into existing control structures can effectively monitor operations from a distance while also enhancing the overall safety of personnel. Proper implementation is essential for any organization looking to improve their efficiency in controlling waste and optimizing their existing control structure.

**REFERENCES**

- [1]. Aghalari, Z., Dahms, H. U., Sillanpää, M., Sosa-Hernandez, J. E., & Parra-Saldívar, R. (2020). Effectiveness of wastewater treatment systems in removing microbial agents: a systematic review. *Globalization and health*, 16(1), 1-
- [2]. Prabavathi, R., Duella, J. S., Chelliah, B. J., Saranya, S. M., & Sheela, A. (2021). An intelligent stabilized Smart Sewage Treatment Plant (STP). 2021 4th International Conference on Computing and Communications Technologies.
- [3]. Ganeshram, V., & Aravind, D.(2022).Development of pH Value Detection Sensor for Water to Detect and Automate Water Neutralization Process. *International Journal of Research and Analytical Reviews*.

**BIOGRAPHY**

Mr.Stalin Jose.C  
Assistant Professor  
Electronics and Communication Engineering  
Adhiyamaan College of Engineering,  
Hosur.



Dhanaseelan H.R  
Bachelor of Engineering (Student),  
Electronics and Communication Engineering  
Adhiyamaan College of Engineering,  
Hosur.



Guruprasath M  
Bachelor of Engineering (Student),  
Electronics and Communication Engineering  
Adhiyamaan College of Engineering,  
Hosur.



Gowtham M  
Bachelor of Engineering (Student),  
Electronics and Communication Engineering  
Adhiyamaan College of Engineering,  
Hosur.



Chetan S  
Bachelor of Engineering (Student),  
Electronics and Communication Engineering  
Adhiyamaan College of Engineering,  
Hosur.



**SJIF: 8.423**



INTERNATIONAL  
STANDARD  
SERIAL  
NUMBER  
INTERNATIONAL CENTRE



# INTERNATIONAL JOURNAL OF INNOVATIVE RESEARCH

IN SCIENCE | ENGINEERING | TECHNOLOGY

 **9940 572 462**  **6381 907 438**  **ijirset@gmail.com**



[www.ijirset.com](http://www.ijirset.com)

Scan to save the contact details